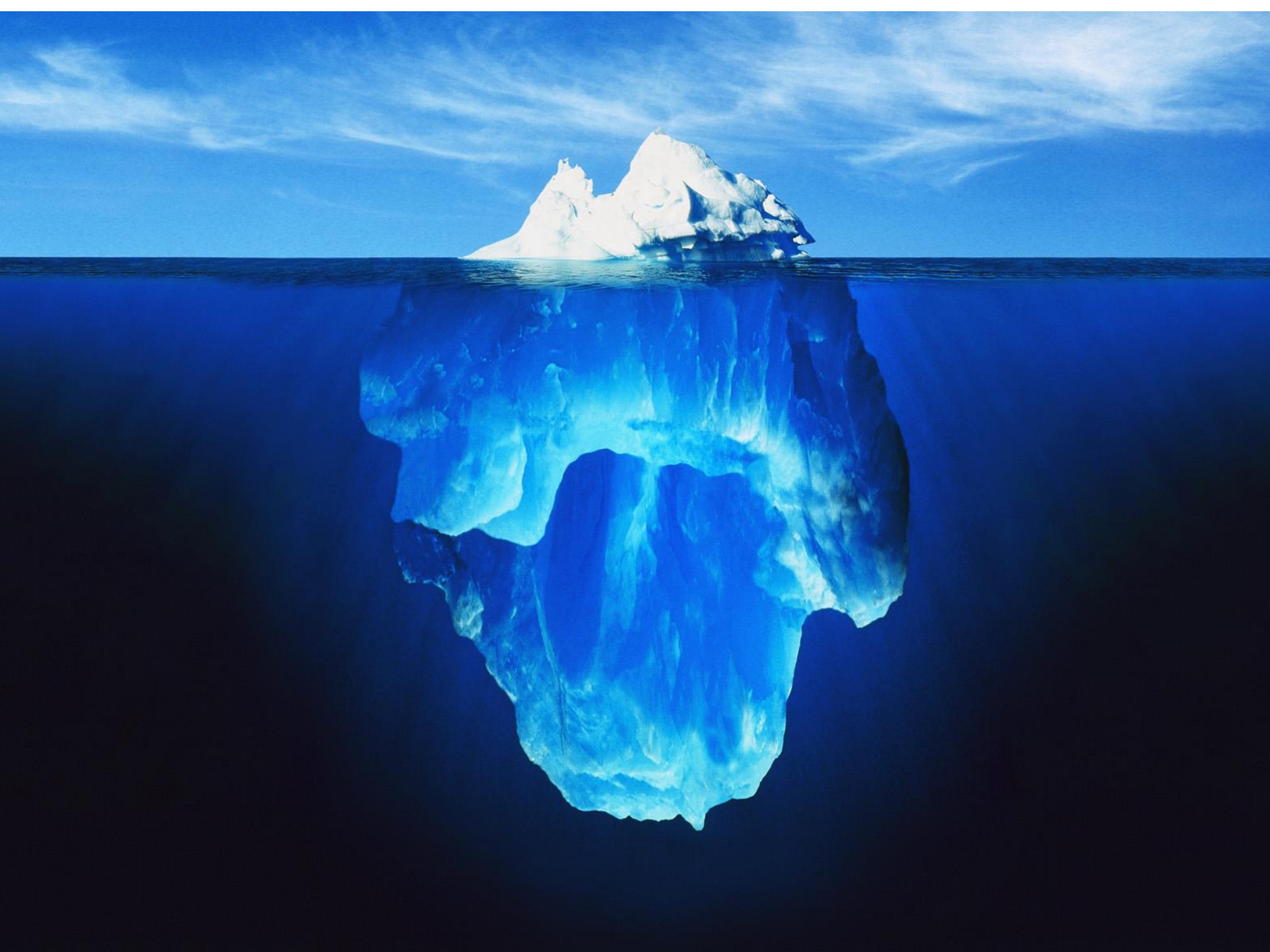




Public Health
England

Right tools, Right application, Right answer

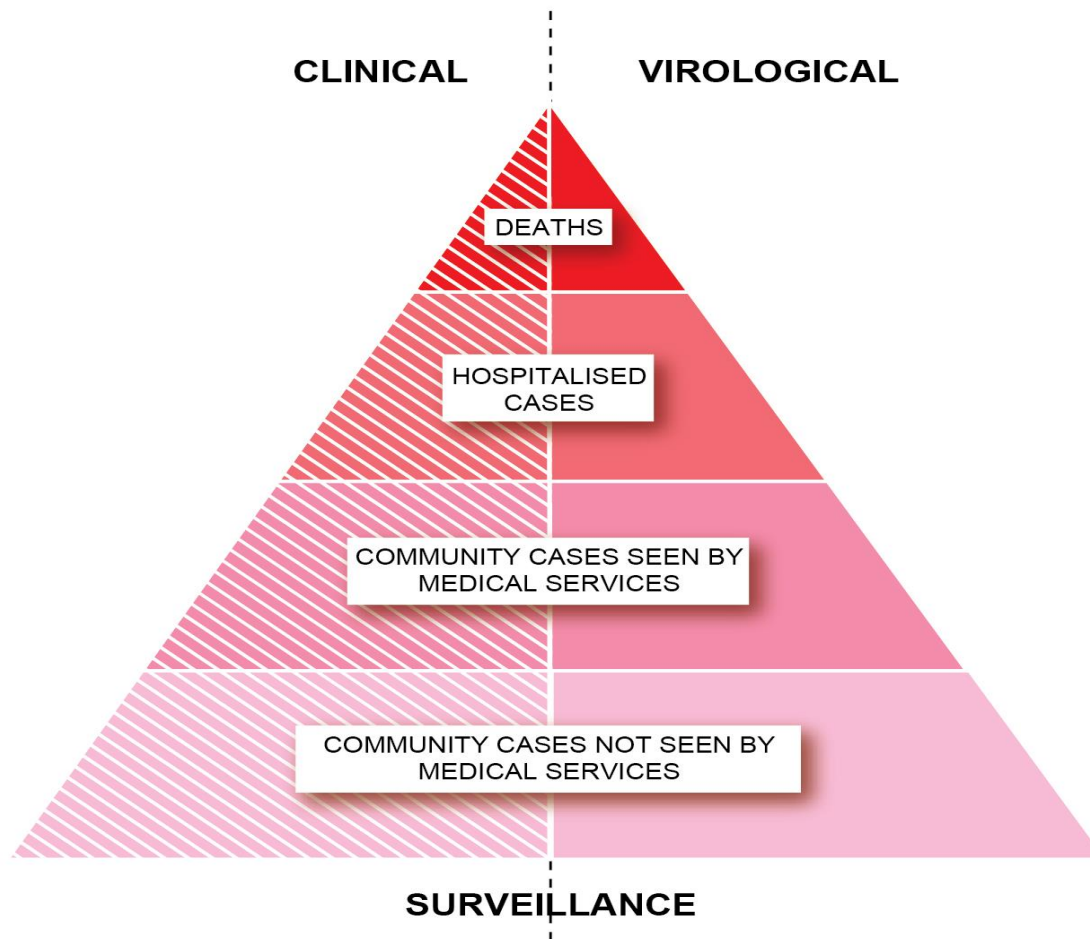
Maria Zambon
Public Health England





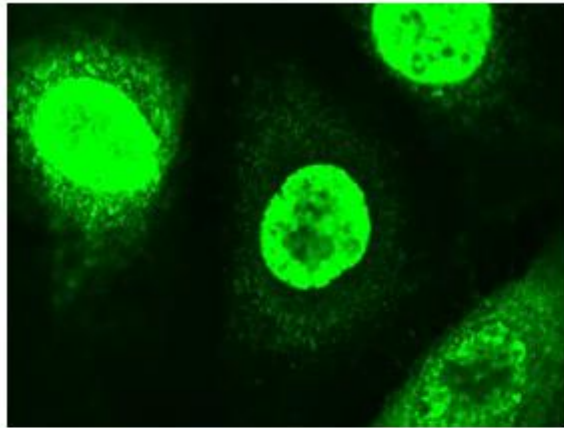
Public Health
England

Tools for Assessment of Disease Burden

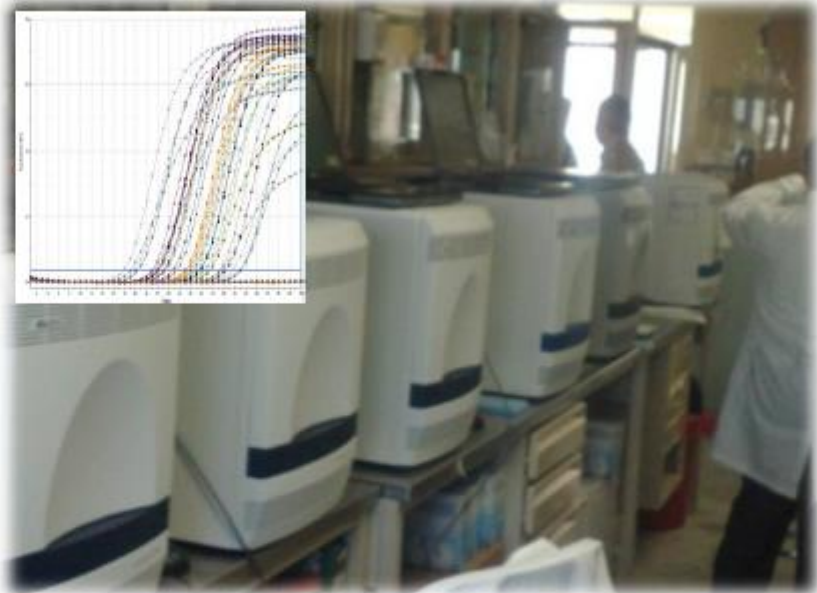




Changes in Diagnostic tools & capability



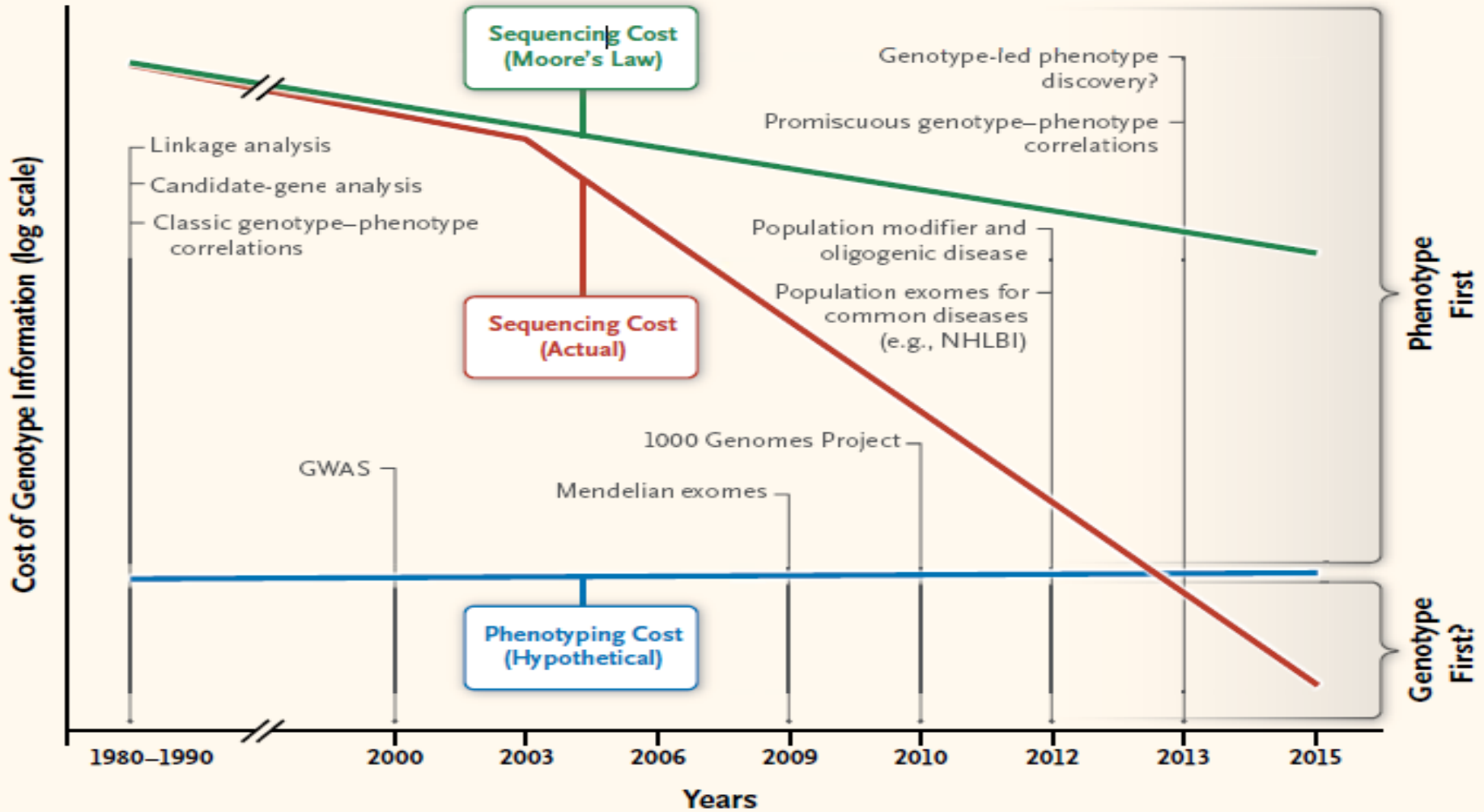
From: Immune-fluorescence



To: Real-time PCR



To Rapid near-patient tests (clinical)

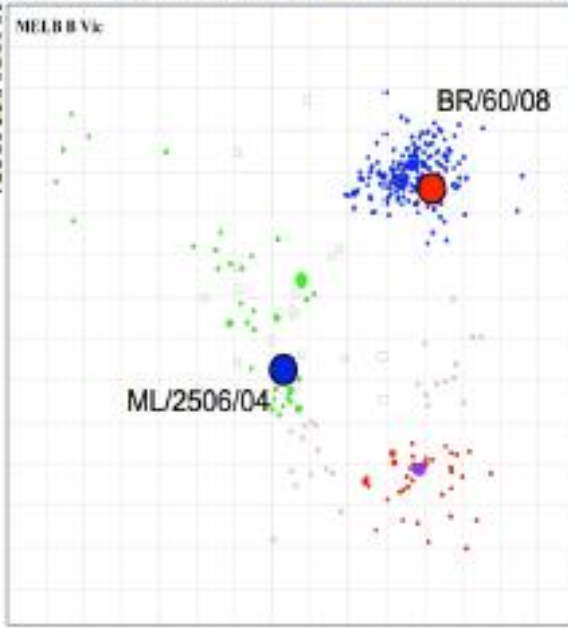


Improving Information for Interventions

HI (and neutralisation) data

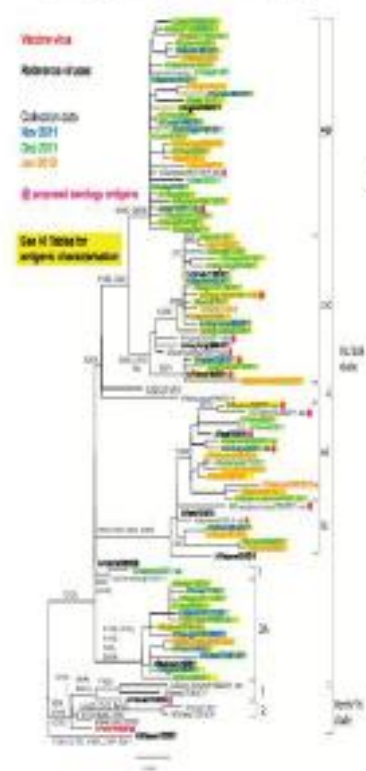
Table 2. Antigenic analysis of influenza A(H3N2) viruses (Guinea Pig RBC with 20mM Osetamivir) 2012-01-11

Viruses	Collection Date	Passage History	Haemagglutination inhibition titer									
			Post infection lowest titer									
			AV/04 12504	AV/05 12511	AV/06 12519	AV/07 12519	AV/08 12519	AV/09 12519	AV/10 12519	AV/11 12519	AV/12 12519	AV/13 12519
group 1	group 2	group 3	group 3C	group 3A	group 3							
REFERENCE VIRUSES												
A/Bangkok/1/2009	2007-02-05	E3/E1	80	80	80	80	80	80	80	80	80	80
A/Bangkok/1/2009	2009-07-04	E3/E2	<	80	80	80	80	80	80	80	80	80
A/Bangkok/1/2009	2009-08-05	E3/E1	320	80	320	320	320	320	320	320	320	320
A/Bangkok/1/2009	2009-08-05	E3/E2	320	80	320	320	320	320	320	320	320	320
A/Bangkok/1/2009	2010-07-13	HK/VC3/SAT7	<	80	80	80	80	80	80	80	80	80
A/Bangkok/1/2009	2010-05-25	E3/E2	320	80	320	320	320	320	320	320	320	320
A/Bangkok/1/2009	2011-04-19	MECK/SAT7	80	80	80	80	80	80	80	80	80	80
A/Bangkok/1/2009	2011-03-30	MECK/SAT7	80	80	80	80	80	80	80	80	80	80
A/Bangkok/1/2009	2010-12-30	E3/E1	320	80	320	320	320	320	320	320	320	320
TEST VIRUSES												
A/Bangkok/1/2009	8 2011-08-12	SAT1	80	80	80	80	80	80	80	80	80	80
A/Bangkok/1/2009	18 2011-08-05	C1/SAT1	<	80	80	80	80	80	80	80	80	80
A/Bangkok/1/2009	18 2011-08-05	C1/SAT1	<	80	80	80	80	80	80	80	80	80
A/Bangkok/1/2009	18 2011-08-05	C1/SAT1	<	80	80	80	80	80	80	80	80	80
A/Bangkok/1/2009	8 2011-08-10	MECK/SAT1	80	80	80	80	80	80	80	80	80	80
A/Bangkok/1/2009	8 2011-08-25	SAT1/SAT1	80	80	80	80	80	80	80	80	80	80
A/Bangkok/1/2009	12 2011-08-25	TK/SAT1	<	80	80	80	80	80	80	80	80	80

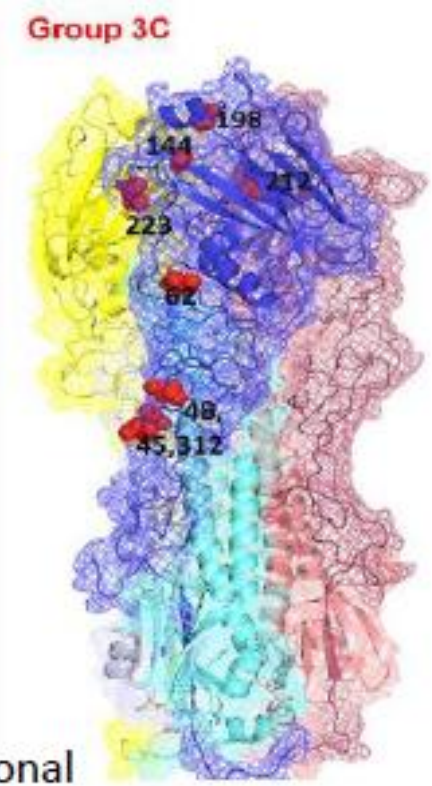


Antigenic cartography

Figure 13. Phylogenetic comparison of influenza A(H3N2)H genes



Sequence analysis



Structural/functional significance of mutations

Introduction of New
technologies

Top of the pyramid

Case studies



Paediatric Fatal Cases 2003-2004

■ Winter 2003-2004 : emergence antigenic variant

A/Fujian/411/2002-like viruses

■ Poor vaccine match

■ Unusual high number of influenza fatalities in children:

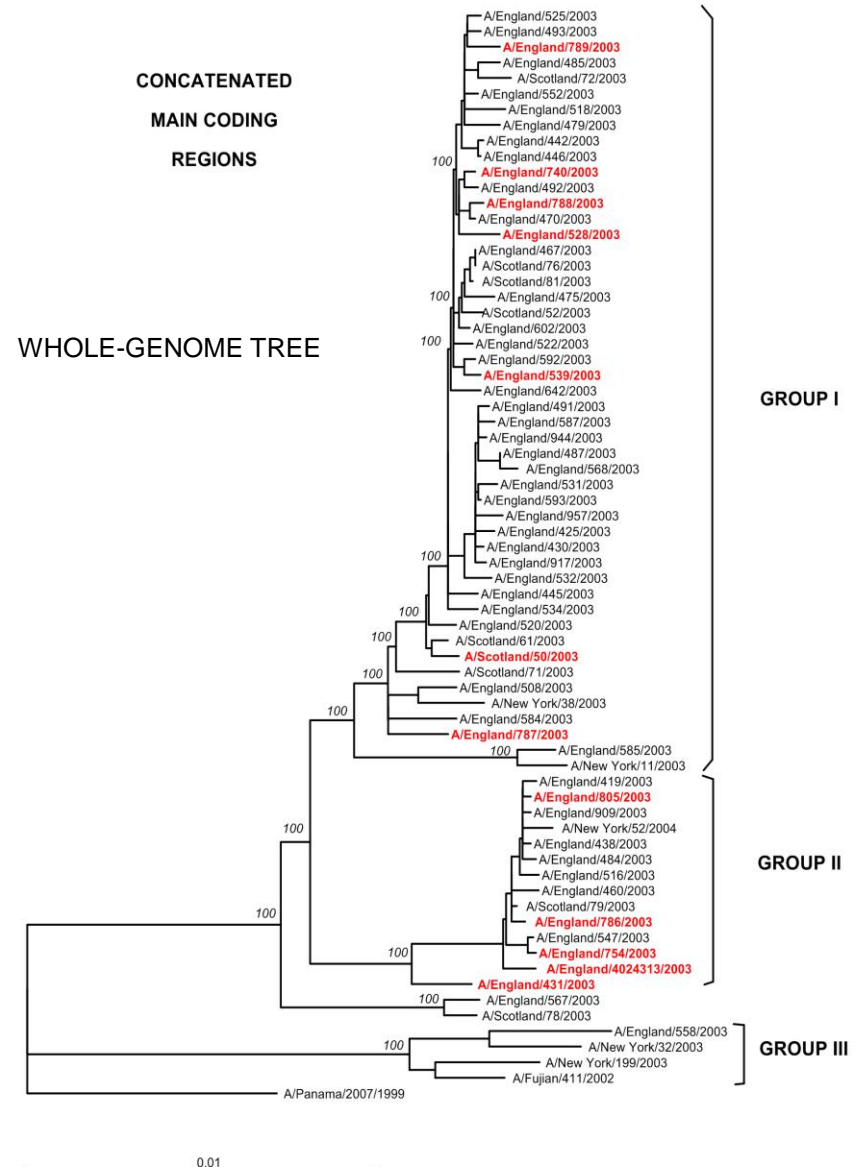
Sept -Dec 2003 in the UK

■ No pre-existing risk factors

■ None vaccinated

■ Bacterial coinfection only in 3/17 (18%) cases

■ WGS of all fatal cases & matched controls (1:3)





Findings

- Fatal Cases distributed along all genetic lineages
- Several additional changes in internal genes & reassortment events noted
- **No genetic changes associated with fatal outcome**
- **Host-related susceptibility → naïve unvaccinated children undergoing first influenza infection**



Public Health
England

Fatal cases , A(H1N1) pandemic 2009 viruses

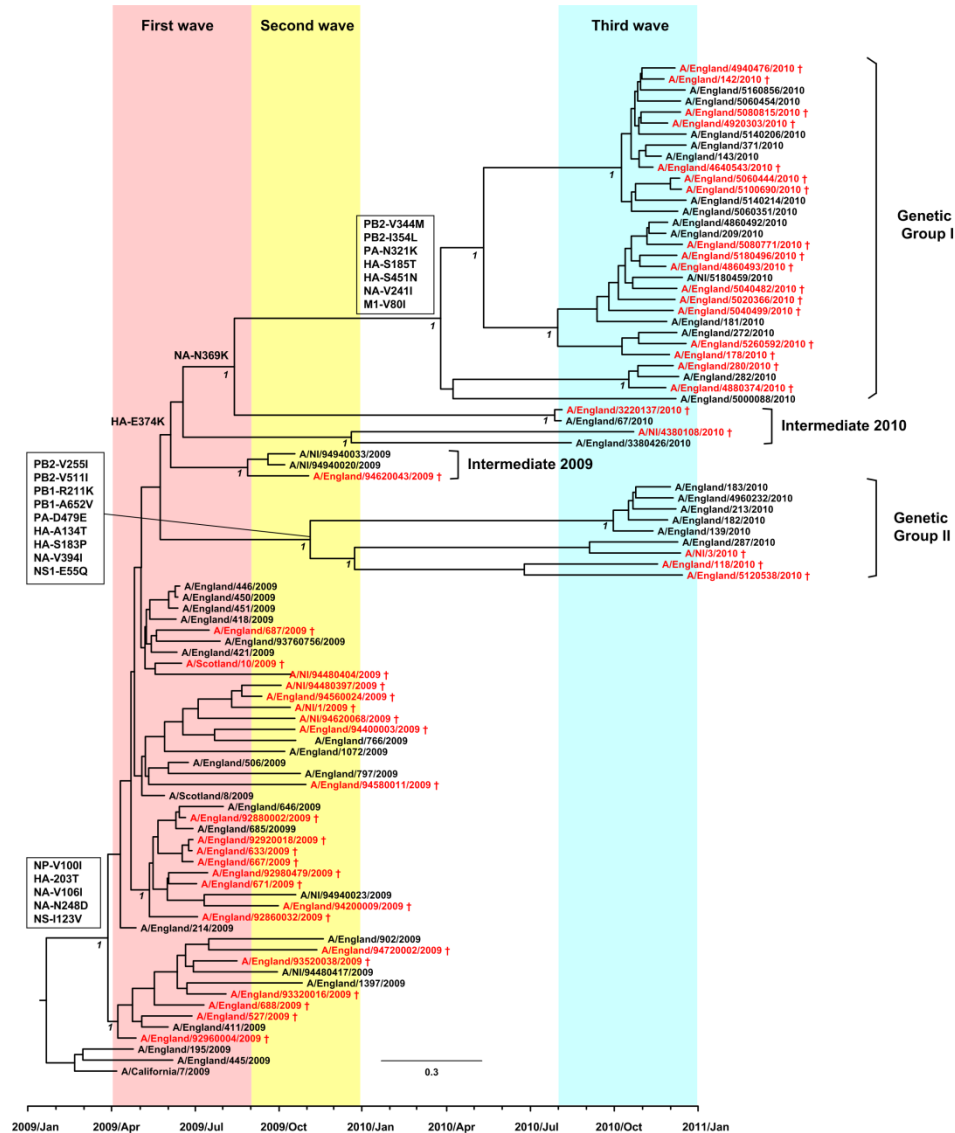
- WGS comparison of viruses isolated from fatal and 'control' mild cases from first, second and third wave of pandemics in the UK

No genetic differences between viruses from fatal and mild cases

Third wave viruses: Several signature changes



Ongoing adaptation to host?
Enhanced fitness?
New virulence factors?

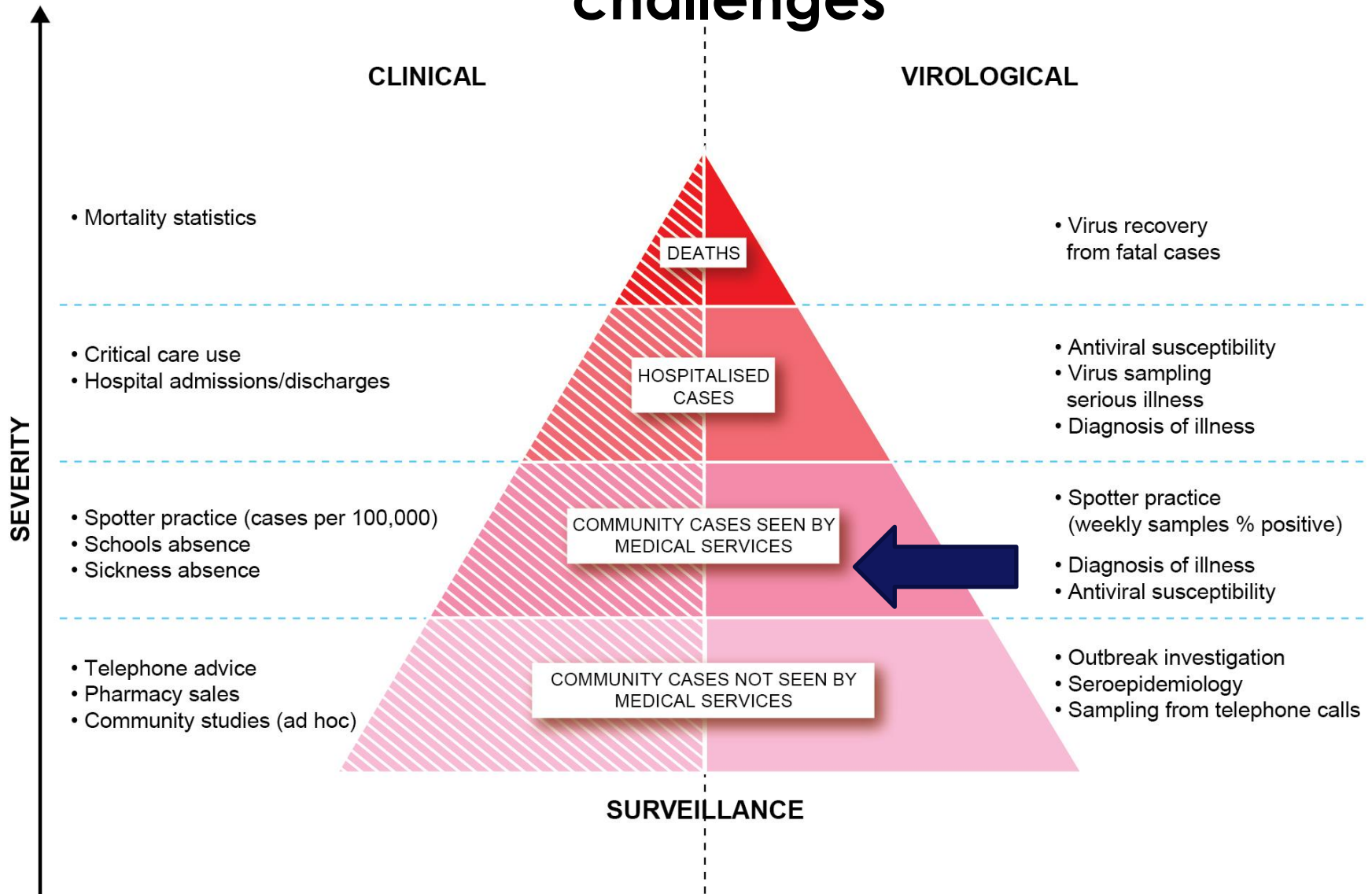




Key findings

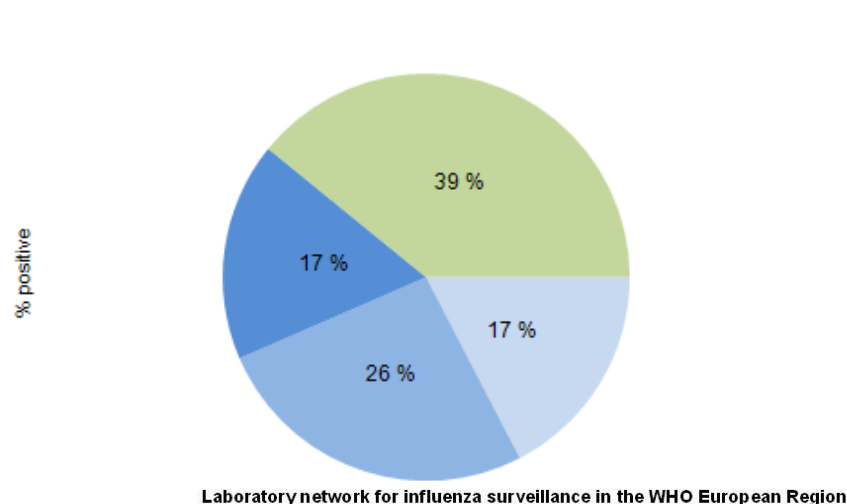
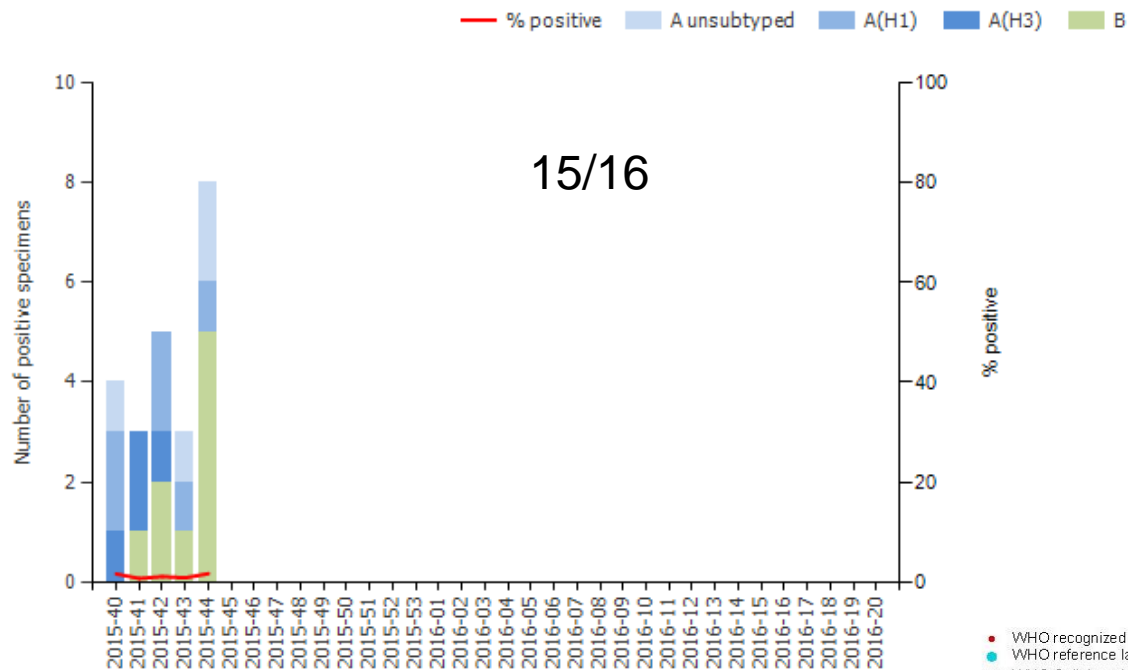
- WGS fatal vs. non-fatal ...no specific genetic changes associated with a fatal outcome,
(HA- D222G → not enough evidence)
- Variation observed in replication kinetics between viral strains in different waves
- Variation observed within and between waves
- **Clinical outcome of infection determined by host-related factors....**

Influenza clinical and public health challenges

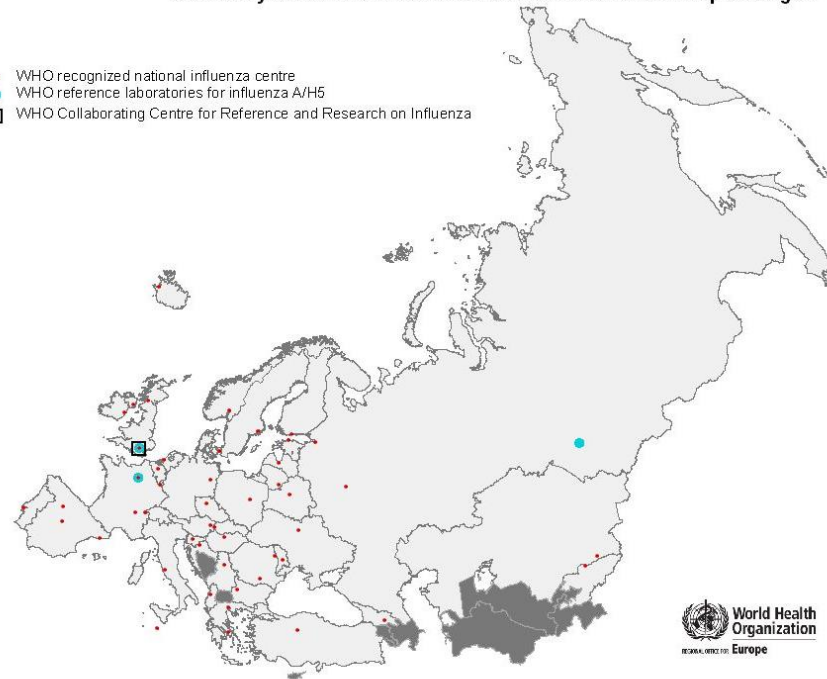


Influenza virus detections in the region

Source: Sentinel



- WHO recognized national influenza centre
- WHO reference laboratories for influenza A/H5
- ◻ WHO Collaborating Centre for Reference and Research on Influenza



© World Health Organization 2015.
 © European Centre for Disease Prevention and Control 2015.
 Reproduction is authorised, provided the source is acknowledged.

European early warning based on convergence of technologies

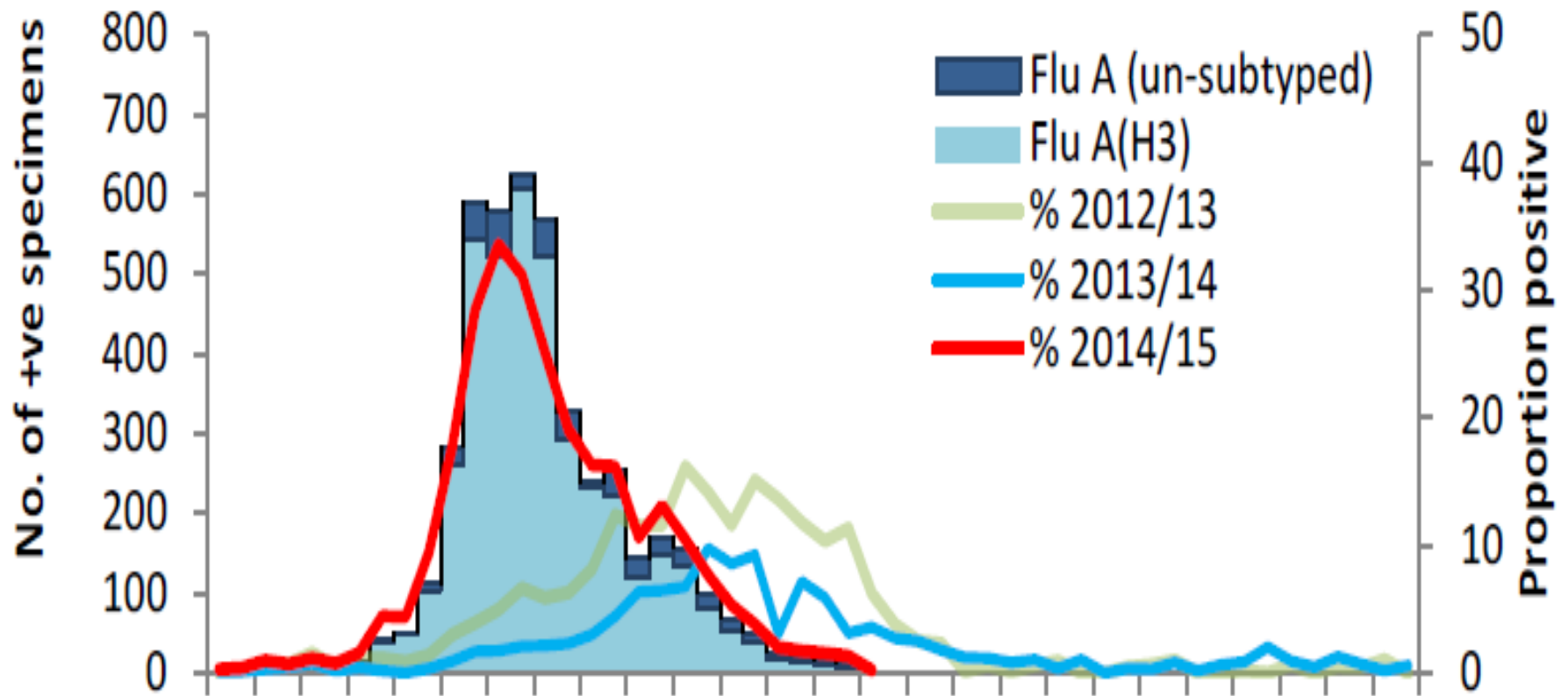
March 2013



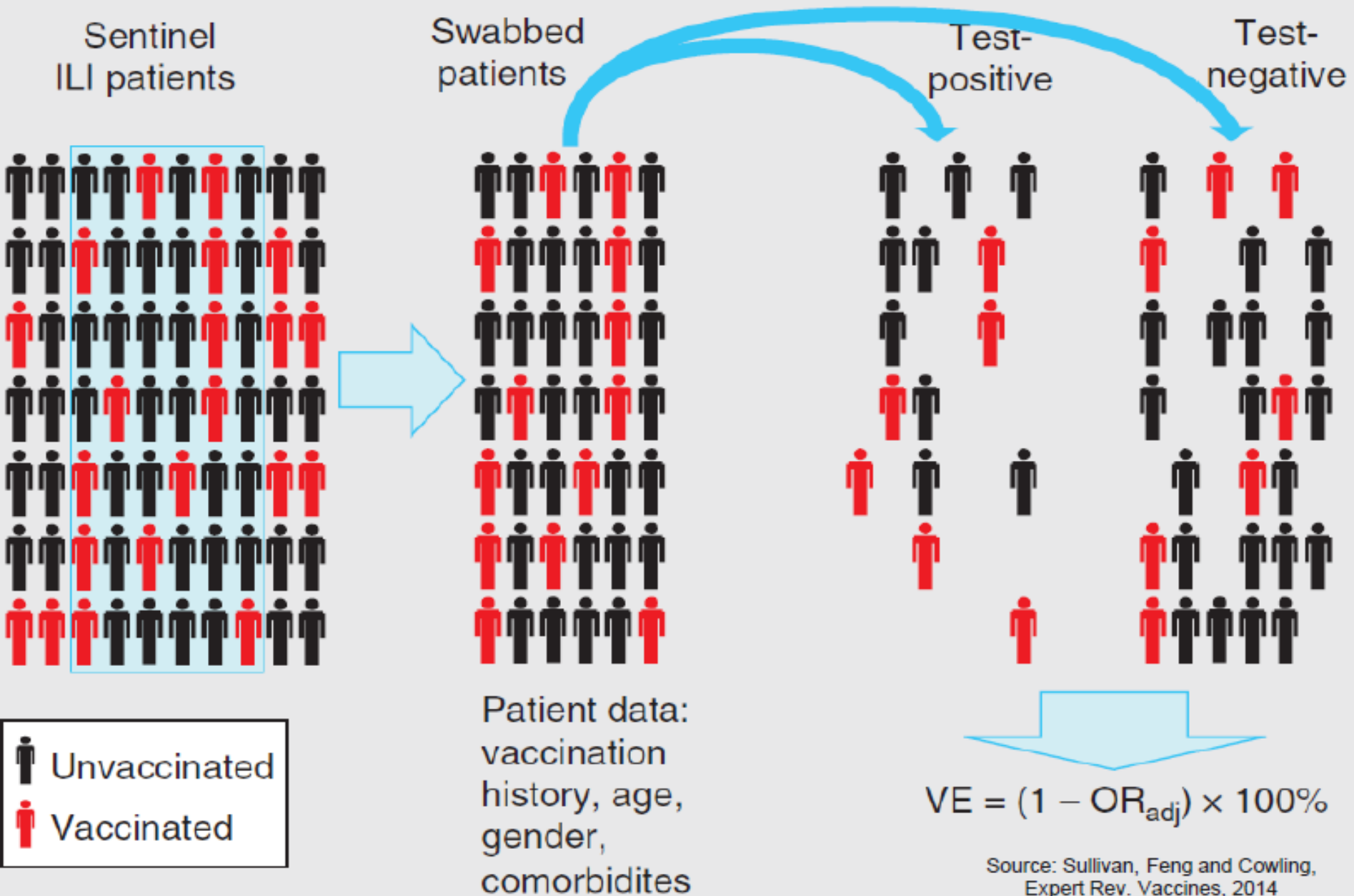
The data are not employed and the presentation of this material does not imply the expression of any opinion by WHO on the part of the Health Organization concerning the legal status of any country, territory, city or area or of its authorities, or concerning the delimitation of its frontiers.

Overall activity Influenza A 2014/15

Developing the information



Test-negative design for estimating influenza VE



Low effectiveness of seasonal influenza vaccine in preventing laboratory-confirmed influenza in primary care in the United Kingdom: 2014/15 mid-season results

R G Pebody (Richard.Pebody@phe.gov.uk)¹, F Warburton¹, J Ellis², N Andrews¹, C Thompson², B von Wissmann³, H K Green⁴, S Cottrell⁴, J Johnston⁵, S de Lusignan⁶, C Moore⁷, R Gunson⁸, C Robertson^{9,10}, J McMenamin³, M Zambon²

1. Public Health England Centre of Infectious Disease Surveillance and Control, London, United Kingdom
2. Public Health England Operations Directorate, Microbiology Services, Colindale, London, United Kingdom
3. Health Protection Scotland, Glasgow, United Kingdom
4. Public Health Wales, Cardiff, United Kingdom
5. Public Health Agency Northern Ireland, Belfast, United Kingdom
6. Royal College of General Practitioners Research and Surveillance Centre, United Kingdom
7. Public Health Wales Molecular Diagnostics Unit, Cardiff, United Kingdom
8. West of Scotland Specialist Virology Centre, Glasgow, United Kingdom
9. University of Strathclyde, Glasgow, United Kingdom
10. International Prevention Research Institute, Lyon, France

Citation style for this article:

Pebody RG, Warburton F, Ellis J, Andrews N, Thompson C, von Wissmann B, Green HK, Cottrell S, Johnston J, de Lusignan S, Moore C, Gunson R, Robertson C, McMenamin J, Zambon M. Low effectiveness of seasonal influenza vaccine in preventing laboratory-confirmed influenza in primary care in the United Kingdom: 2014/15 mid-season results. *Euro Surveill.* 2015;20(5):pii=21025. Available online: <http://www.eurosurveillance.org/ViewArticle.aspx?ArticleId=21025>

Lisa Armstrong
The Indoor Coat – fashion silliness that's also brilliant
Style page 27

Wolf Hall
Is it becoming the great Tudor turn-off?
Features page 23

A British exodus
'Jews aren't safe here any more'
Comment page 19

The Daily Telegraph

national newspaper of the year
telegraph.co.uk

Flu jab given to millions is useless

Number of deaths this winter will be the worst for 15 years as vaccination has no effect on most common strain of the virus

By Laura Donnelly, Health Editor
THE flu vaccine given to millions of people in Britain has proved almost entirely useless, officials have admitted, warning that the number of deaths this winter will be the highest for 15 years.
The dominant strain of influenza in circulation, which is particularly lethal among the elderly, is a different version from the type used in the jab, Public Health England warned.
The research, the vaccine is working in only three per cent of those given a shot, it is normally effective in around half.
Life can be kept up to possible with anti-viral drugs to prevent the severe symptoms and in care homes where serious complications.
The chief influenza research on more than 1.8 million patients conducted in hospitals

Will Friday night be rugby night at Twickenham?



Willie's Sam Warburton and England's Chris Robshaw with the Six Nations trophy
By David Miller
Rugby News Commentator
THE prospect of Twickenham being the venue for the Six Nations final is still up in the air, as the Rugby Football Union (RFU) considers the pros and cons of the venue.
London's Millennium Stadium will host the Six Nations opening fixtures, England and Wales tonight – a rare still popular with the Scots.

Labour backer fears Miliband victory

By Christopher Miles and Simon Willmet
ONE of the Labour Party's biggest backers has warned that the party will be crushed if Ed Miliband wins the general election.
The former Conservative MP, who has been a vocal critic of the Labour leader, said that the party's policies were "outdated" and "out of touch" with the electorate.
He said that the Labour Party's policies were "outdated" and "out of touch" with the electorate.

with the new Oseltamivir seen being used last night about its health officials had not tested the virus earlier.
There was concern that using antibodies of one strain, those who have been vaccinated, could not have the best progress, officials said. They also said recently at Twickenham, this has been a warning sign of what is to come of working meeting patients with the virus's dominant strain.
Last month, after the Daily Telegraph highlighted doctors' concerns that there was no test to see if the virus was still in the system, health officials said there was no evidence that the virus was still in the system.
The chief influenza research on more than 1.8 million patients conducted in hospitals

Mortgage wars to save borrowers £1,700 each
By Nicola Blackman and Dan Hyde
The biggest savings from the mortgage rate cap are now in people's pockets.

Scottish Daily Mail

90p

GET READY FOR VALENTINE'S DAY
50% off at Interflora
WHEN YOU SPEND £30
SEE PAGE 48
Membership to MyMail and online access required. Terms apply.

Thousands of Scots given job which only protects 3pc of patients as health chiefs admit they knew about flaw months ago

WARNING OVER FLU VACCINES

Continued...

Useless flu jab blamed for surge in death toll

THIS year's flu jab is offering almost no protection to vulnerable people at risk of suffering severe effects from the virus, research revealed yesterday.
By ELIZABETH ROBINSON
PUBLISHED: 08:52, Fri, Feb 6, 2015 | UPDATED: 29:26, Tue, Feb 10, 2015

other strains of the virus circulation could still rise.
The decrease about which health officials warned means not how likely the vaccine was working, a long term one, she said.
"If they didn't make the jab of the jab, it would be a good sign," she said.
"Officials said that the jab was not published the case of the vaccine, they had contacted it on the ground."
"Officials said that the jab was not published the case of the vaccine, they had contacted it on the ground."
"Officials said that the jab was not published the case of the vaccine, they had contacted it on the ground."

BBC NEWS
Home | UK | World | Business | Politics | Tech | Science | Health | Education | Entertainment & Arts | Video & Audio
Flu vaccine 'barely effective' against main viral strain
By James Gallagher
Health editor, BBC News website
© 5 February 2015 Health
Top Stories
Nurse guilty of murder
A nurse is found guilty of murdering patients and poisoning 19 others at Greater Manchester's Salford Hospital.
© 23 minutes ago
Cameroon renews NHS promises
© 52 minutes ago
Harry visits Chelsea FC
© 14 minutes ago

Daily Mail
FRIDAY, FEBRUARY 6, 2015 www.dailymail.co.uk 60p
SOLVE YOUR SLEEP PROBLEMS WITH OUR SUPERB YOGA GUIDE
FREE 8-PAGE SIX NATIONS PULLOUT CENTRE PAGES

FLU JAB IS A WASTE OF TIME FOR 97% OF PATIENTS
Myleene's war on grasping
Email spat: Broadcaster Myleene Klass

around 60 per cent of patients. Last night questions were being asked about why health officials did not

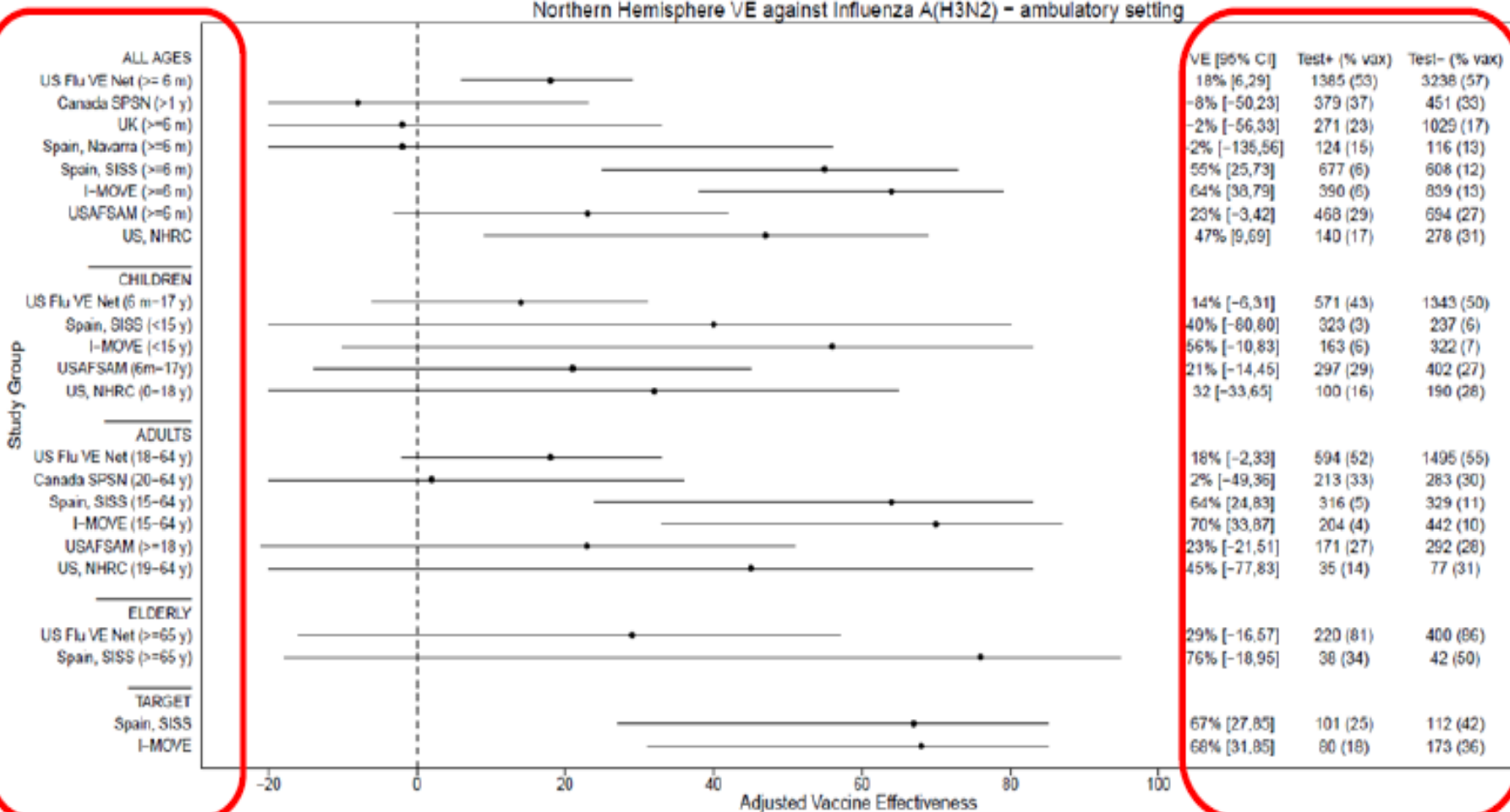


The Flu jab will protect just three per cent
By Sophie Borland
Health Correspondent

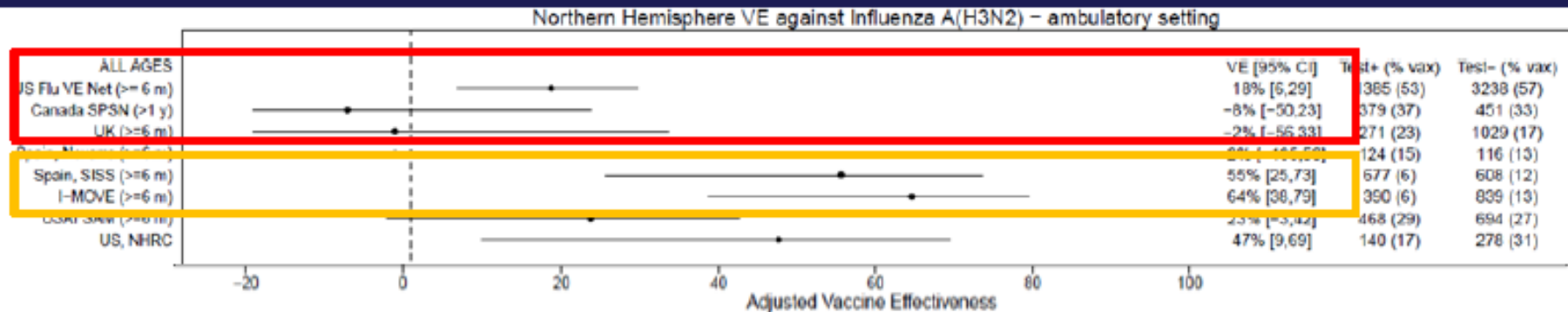
Influenza A(H3N2) Northern Hemisphere – Interim Data

Ambulatory setting

Northern Hemisphere VE against Influenza A(H3N2) – ambulatory setting



Influenza A(H3N2) Northern Hemisphere

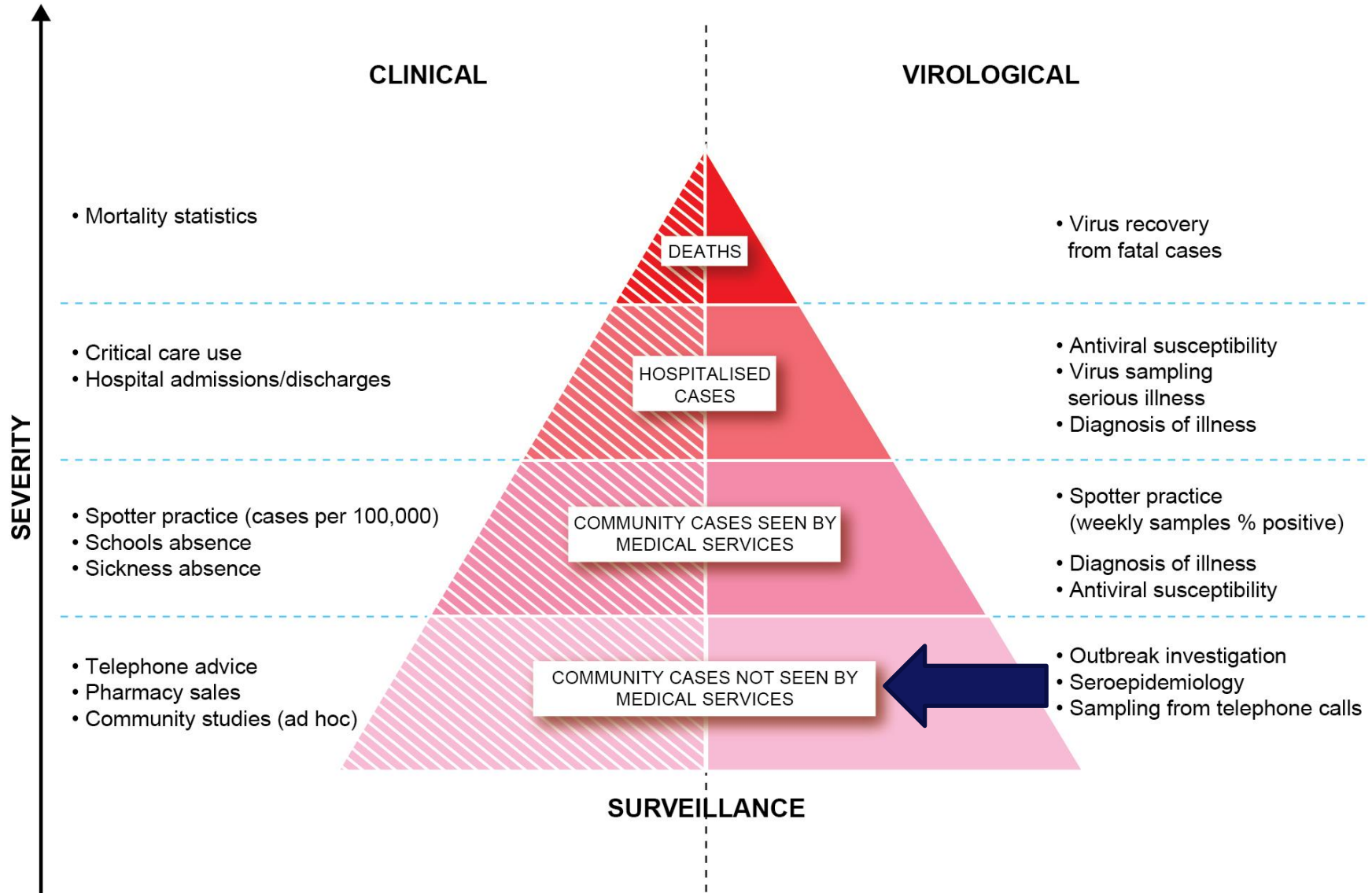


Page 7

Study Site	H3N2-positive cases	Genetically-characterized H3N2 viruses	Group 3C.2a n (%)	Group 3C.3a n (%)	Group 3C.3 n (%)	Group 3C.3b n (%)
US Flu VE Net	1385	764	624 (82%)	25 (4%)	26 (3%)	89 (11%)
Canada, SPSN	379	226	205 (91%)	0	2 (1%)	
UK	271	44	35 (80%)	0	9 (20%)	
Spain, SISS	677	97	53 (55%)	9 (9%)	35 (36%)	
Europe, I-MOVE	390	27	14 (52%)	3 (11%)	10 (37%)	

Page 10

Influenza clinical and public health challenges



Crowd sourcing ?

Free home flu test kits for Flusurvey participants

Scientists from Flusurvey and i-sense call for public to help monitor spread of UK flu more accurately than ever before

People taking part in this year's Flusurvey, the UK's biggest crowd-sourced study of influenza will for the first time be offered a swab to confirm if their symptoms are caused by a flu virus or not as part of a new collaboration with i-sense. Data from social media and internet searches will also be combined with Flusurvey, allowing flu trends to be monitored across the UK more accurately and earlier than ever before.



Self-sampling for community respiratory illness: a new tool for national virological surveillance

A J Elliot (Alex.Elliot@phe.gov.uk)¹, A Bermingham², A Charlett², A Lackenby², J Ellis², C Sadler², P Sebastianpillai², C Powers², D Foord³, E Povey³, B Evans², H Durnall⁴, D M Fleming⁴, D Brown², G E Smith¹, M Zambon²

1. Public Health England, Birmingham, United Kingdom

2. Public Health England, London, United Kingdom

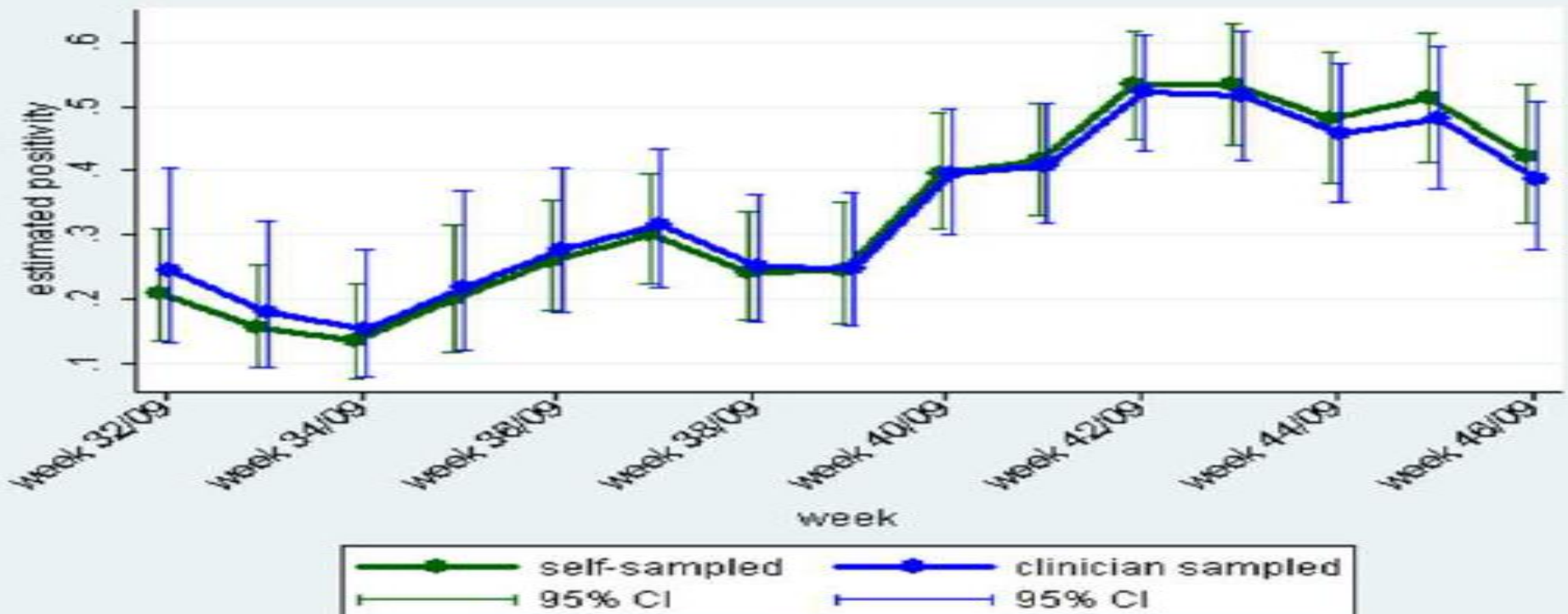
3. National Health Service Direct, Milton Keynes, United Kingdom

4. Royal College of General Practitioners Research and Surveillance Centre, Birmingham, United Kingdom

Citation style for this article:

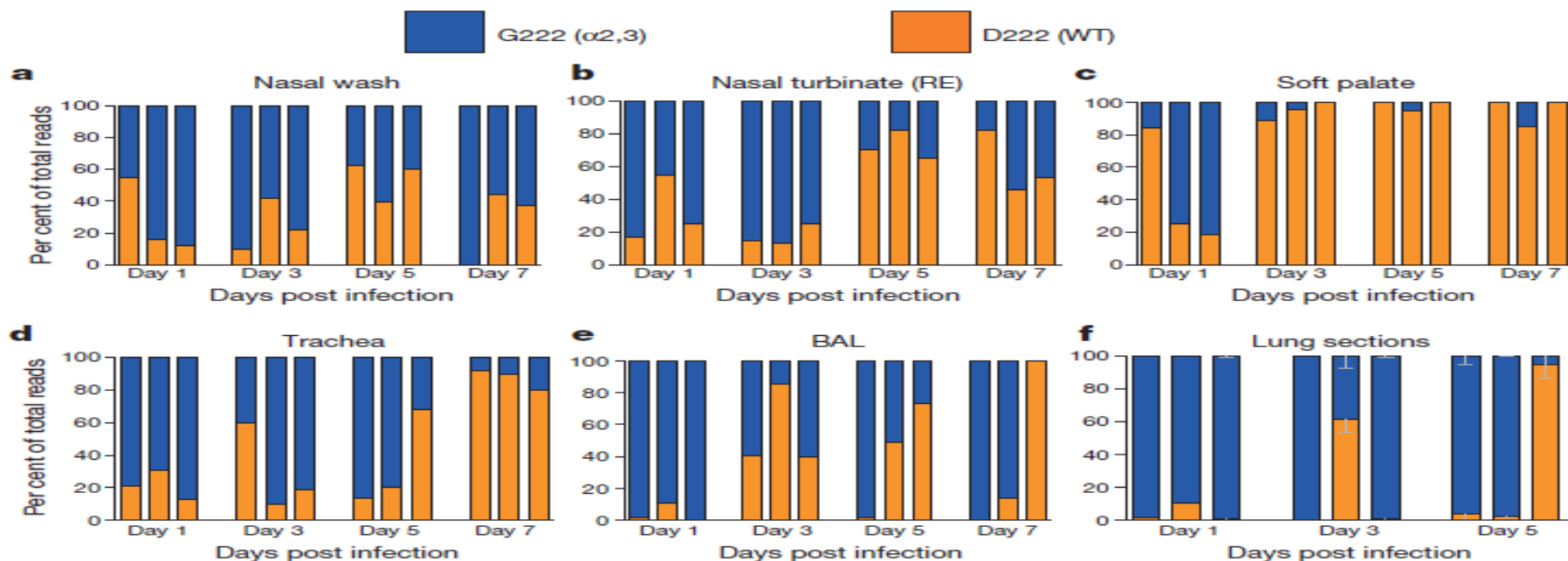
Elliot AJ, Bermingham A, Charlett A, Lackenby A, Ellis J, Sadler C, Sebastianpillai P, Powers C, Foord D, Povey E, Evans B, Durnall H, Fleming DM, Brown D, Smith GE, Zambon M. Self-sampling for community respiratory illness: a new tool for national virological surveillance. *Euro Surveill.* 2015;20(10):pii=21058. Available online: <http://www.eurosurveillance.org/ViewArticle.aspx?ArticleId=21058>

Article submitted on 03 September 2013 / published on 12 March 2015



The soft palate is an important site of adaptation for transmissible influenza viruses

Seema S. Lakdawala¹†, Akila Jayaraman², Rebecca A. Halpin³, Elaine W. Lamirande¹, Angela R. Shih¹, Timothy B. Stockwell³, Xudong Lin³, Ari Simenauer³, Christopher T. Hanson¹, Leatrice Vogel¹, Myeisha Paskel¹, Mahnaz Minai⁴, Ian Moore⁴, Marlene Orandle⁴†, Suman R. Das³, David E. Wentworth³†, Ram Sasisekharan² & Kanta Subbarao¹





Public Health
England

The Big Picture

- Switching technologies, improve prediction, increase information strain diversity. WGS/NGS...unbiased information
 - **Technology is ahead of Knowledge (Virus & patient)**
 - **STRATIFIED MEDICINE...Consider the host...link to clinical outcome**
 - **Population Susceptibility....better methods for prediction of susceptibility**
 - Study of vaccine failures will help improve vaccine design
- Automated analysis of known drug resistance mutations
- Pay attention to the sample. Rubbish in = rubbish out.



Implications & Issues

Moving to an unbiased approach to analysis

Data analysis is bottleneck :

We have more data than we know what to do with

Powerful epidemiological analysis: new insights and hypothesis generation

Data storage and release issues